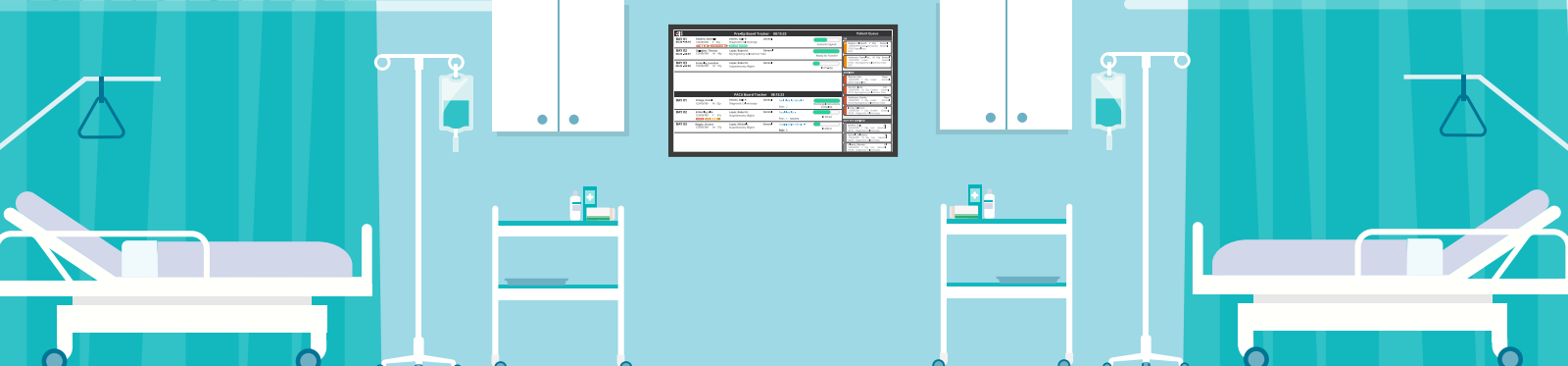




WAYS A PATIENT TRACKING SYSTEM HELPS IMPROVE ASC MANAGEMENT



PreOp/PACU Tracking Board

The PreOp and PACU tracking board is typically placed at the nursing station near the PreOp and PACU bays. It shows which patients are in PreOp and PACU and which patients are in the queue.



1 Critical patient information and milestone updates are in one place for staff convenience.



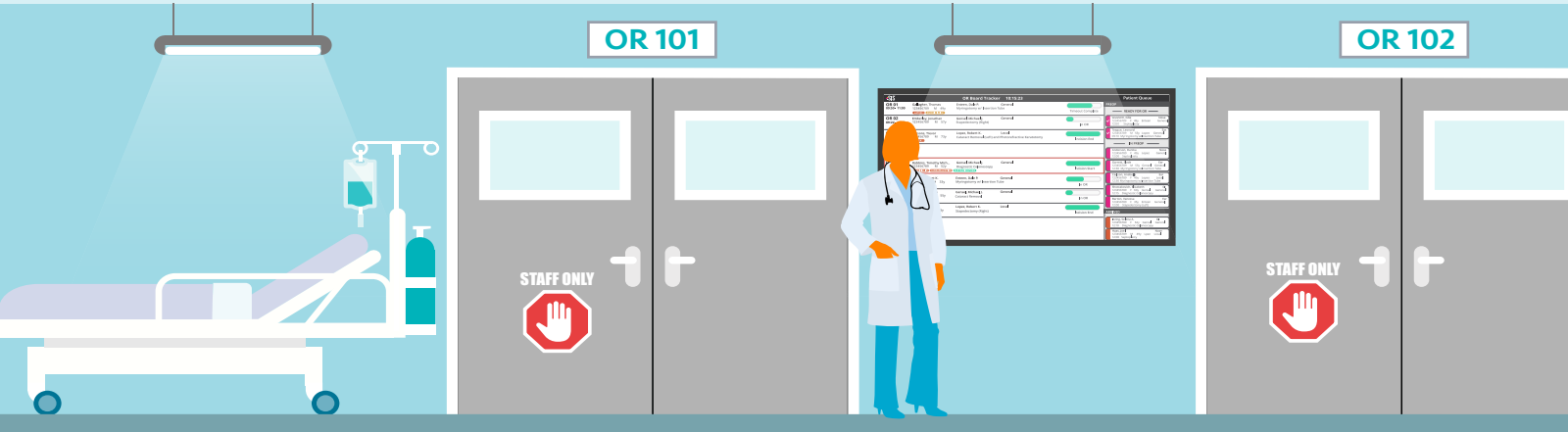
2 Patient information automatically updates on the boards as a byproduct of electronic nursing documentation.



3 Electronic tracking boards eliminate the shortcomings of dry-erase boards.



4 Multiple electronic screens that cycle through cases effectively accommodate high-volume ASCs.



OR Tracking Board

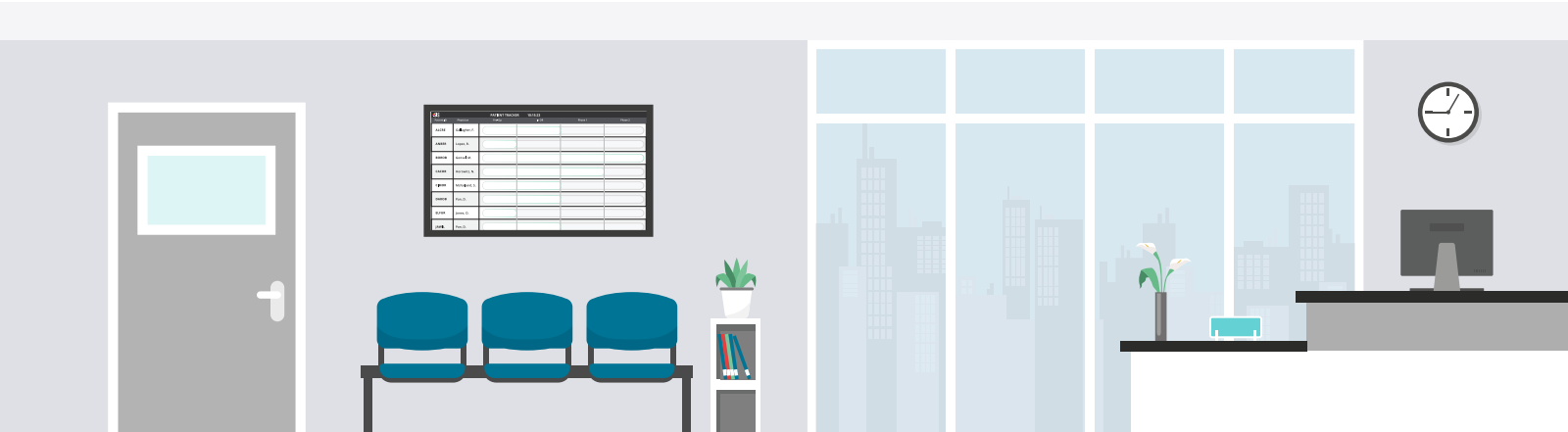
The OR tracking board is typically placed in a common area near the outside of the ORs. *Note: Some of the benefits of its use are similar to those associated with the PreOp and PACU board, as described above.*



5 OR staff can easily check status of ORs throughout the day with convenient, easy-to-read displays.



6 Cases that are running late are highlighted, prompting staff to take action.



Waiting Room Tracking Board

The patient tracking board for a waiting room is designed to help keep family and friends apprised of the patient's progress throughout the surgical event. A HIPAA-compliant display shows a unique identifier for the patient along with a progress bar.



7 Family members and friends can easily track their loved one's progress.



8 Staff productivity and satisfaction increases with fewer interruptions and questions about patient status.

Patient Tracking Technology is a Difference Maker

Patient tracking technology is yet another example of how innovation can dramatically improve processes that seem to be working well enough on the surface but, when analyzed further, are inefficient in ways that can decrease facility and staff performance and increase patient safety risks. When evaluating electronic patient tracking solutions, here are a few key considerations:

- Look for a system designed for ASCs rather than hospitals or clinics so that features and functions are applicable to your setting.
- If you are using or considering an EMR, check to see if information documented in the EMR is available for digital display in various patient tracker formats.
- Talk to current users of the systems you are considering to learn how the technology has improved care team communications and ASC efficiency.
- Demo the systems, if possible, and then make your choice.

By investing in the right patient tracking system, you will improve the experience of people coming to and working in your ASC.

SEE WHAT SIS CAN DO FOR YOU!
info.SISFirst.com/sischarts-trackerwebinar

sisfirst.com

